



*Repairs
Retrofitting &
Soil Stabilization*

ABOUT US

Inci-Retrofit was found in 2008 to serve in the specialised area like Repair, Retrofitting and Soil stabilisation. In a short span of time it has gained the confidence and credibility of major Builders, Developers, Contractors, other public and private companies of Bangalore and performed to their expectations.

The company has sizeable market share especially in the area of soil stabilisation. It has carved a niche in the market for its quality, timely delivery and client satisfaction. We have handled different projects under different segments and each one is unique in nature.

OUR POLICY

We are committed to high ethical standards in our business and approach and develop acquaintance as an opportunity for service.

SERVICES

ANCHORS

CONCRETE REPAIRS

CONCRETE SURGERY & CORE DRILLING

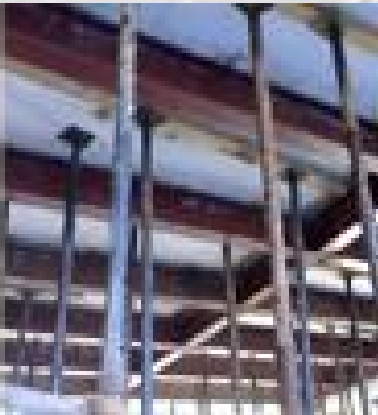
DRILLING AND GROUTING WORKS

FIBRE WRAPPING - ACS

PROTECTIVE COATING

SHOTCRETING

SOIL STABILISATION



Anchors in RCC Elements

- Dowel bars
- Shear connectors
- Grip expansion bolts
- Chemical anchor bolts
- Sleeves for steel plate bonding
- Foundation bolts



Concrete repairs in RCC Elements

- Crack repairs
- PMM repairs
- Epoxy mortar repairs
- Rebar treatment
- Beam / Column steel plate bonding
- Micro concreting

Concrete Surgery & Core-Drilling

- Concrete cutting by wire saw and wall saw technique
- Controlled chipping of concrete
- Core drilling for ducts



Drilling and grouting of structural cracks to arrest water leakage, to fill voids in honey combed areas, etc.,

- Fixing of nozzles / packers
- Grouting with Cement
- Grouting with Epoxy
- Grouting with Monomer
- Grouting with PU



Fibre wrapping (ACS) for strengthening RCC Elements

- Glass fibre wrapping
- Carbon fibre wrapping
- Carbon laminates



Protective coating on the exposed concrete surface of bridges, silos, chimneys etc.,

- PU based coating
- Aliphatic, Acrylate based coating
- Epoxy based coating
- Silane Siloxane coating
- Zinc rich based coating
- Polymer based coating

Shotcreting to strengthen the RCC Elements

Shotcrete is pneumatically applied concrete by dry mix (Cement: Sand:<10 mm aggregates) method using a specially designed hopper and a compressor.



Soil stabilization for deeper excavation & slope protection

- Soil nailing
- Grouted nails
- Contiguous piles
- Micro piles
- Soil/Rock anchors
- Shotcreting

